

Montgomery County

Auditor



Karl L. Keith

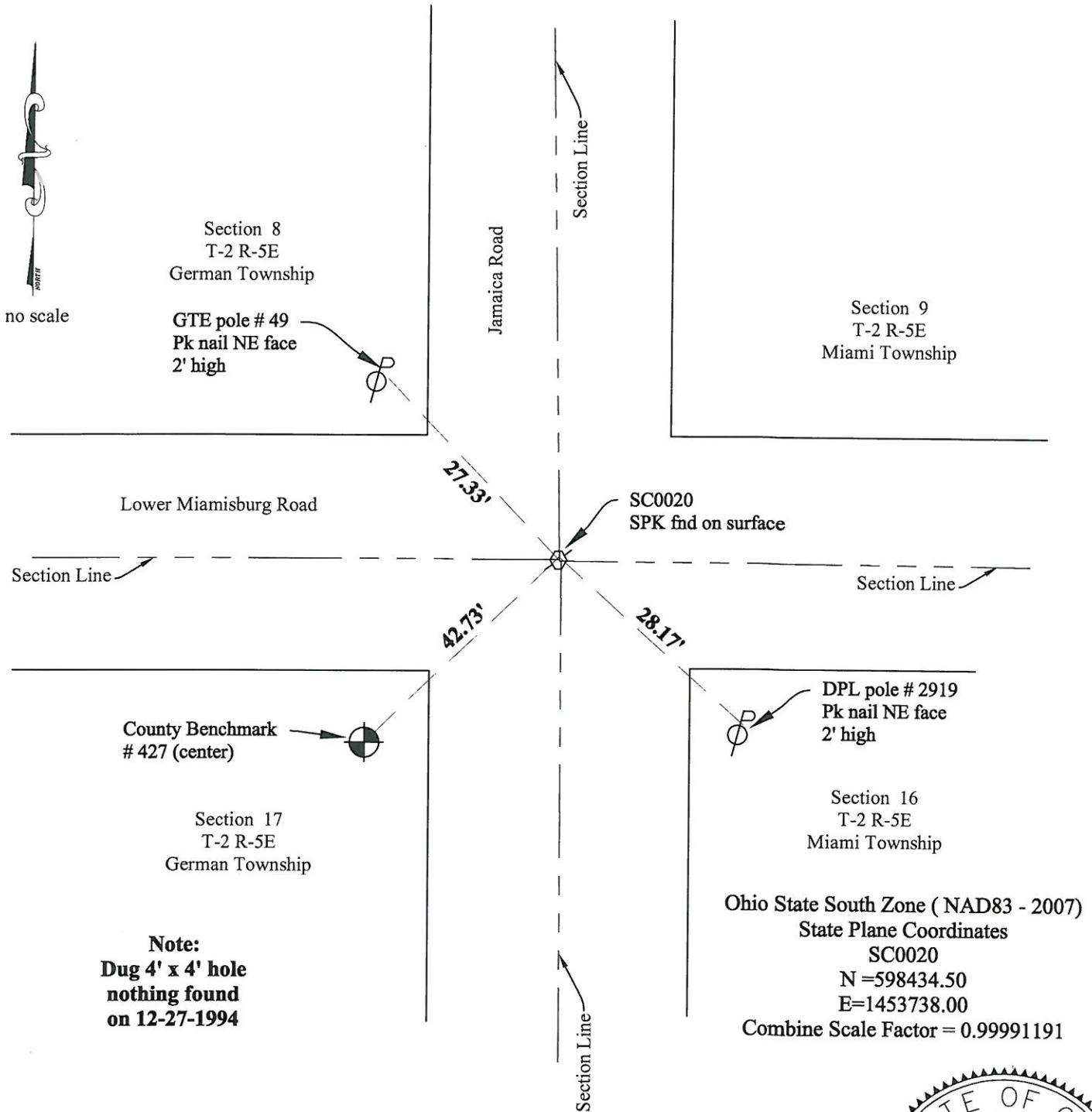
Section Corner Monument Documents
access courtesy of

Montgomery County Auditor's Office

Documents are to be used as public general information and is provided strictly as a courtesy. No warranty as to the content, accuracy or completeness of any information provided herein.

MONTGOMERY COUNTY ENGINEERS OFFICE

Section Corner Monument Record No. 0020



Information displayed here obtained from original field notes dated 12-27-1994. Checked and verified on 1-23-2012

The data contained herein is for informational purposes only, and is provided as a public service. Users may not claim detrimental reliance therein. Monumentation shown does not necessarily constitute the precise location of the corner. This document does not reflect a boundary survey in accordance with OAC 4733-37.

Prepared by:

Steven E. Beachler 4/10/12
Steven E. Beachler, P.S. No. 6879

